

User agent

Authorization manager

Service provider

Consumer

Step 1: Provision consumer key and access token to consumer (V2009.04.09.1)
Dotted-line steps take place outside this protocol.

Need to access resource "r"

GET "r"

401 unauthorized; protection realm "pr";
location of protection realm metadata

opt [consumer doesn't have access token]

GET protection realm "pr" metadata

Protection realm "pr" metadata
(incl. authorization manager location
and service provider handle "sph")

opt [consumer doesn't have consumer key]

POST request consumer key

Allocate consumer key

Consumer key "ck" and secret "cks"

opt [consumer doesn't have access token]

POST request access token
(w. "sph", "ck" and sign using "cks")

Verify signature "cks"

User agent

Authorization manager

Service provider

Consumer

Step 1: Provision consumer key and access token to consumer (V2009.04.09.1)
Dotted-line steps take place outside this protocol.

Need to access resource "r"

GET "r"

401 unauthorized; protection realm "pr";
location of protection realm metadata

opt [consumer doesn't have access token]

GET protection realm "pr" metadata

Protection realm "pr" metadata
(incl. authorization manager location
and service provider handle "sph")

opt [consumer doesn't have consumer key]

POST request consumer key

Allocate consumer key

Consumer key "ck" and secret "cks"

opt [consumer doesn't have access token]

POST request access token
(w. "sph", "ck" and sign using "cks")

Verify signature "cks"

User agent

Authorization manager

Service provider

Consumer

Step 1: Provision consumer key and access token to consumer (V2009.04.09.1)
Dotted-line steps take place outside this protocol.

Need to access resource "r"

GET "r"

401 unauthorized; protection realm "pr";
location of protection realm metadata

opt [consumer doesn't have access token]

GET protection realm "pr" metadata

Protection realm "pr" metadata
(incl. authorization manager location
and service provider handle "sph")

opt [consumer doesn't have consumer key]

POST request consumer key

Allocate consumer key

Consumer key "ck" and secret "cks"

opt [consumer doesn't have access token]

POST request access token
(w. "sph", "ck" and sign using "cks")

Verify signature "cks"

User agent

Authorization manager

Service provider

Consumer

Step 1: Provision consumer key and access token to consumer (V2009.04.09.1)
Dotted-line steps take place outside this protocol.

Need to access resource "r"

GET "r"

401 unauthorized; protection realm "pr";
location of protection realm metadata

opt [consumer doesn't have access token]

GET protection realm "pr" metadata

Protection realm "pr" metadata
(incl. authorization manager location
and service provider handle "sph")

opt [consumer doesn't have consumer key]

POST request consumer key

Allocate consumer key

Consumer key "ck" and secret "cks"

opt [consumer doesn't have access token]

POST request access token
(w. "sph", "ck" and sign using "cks")

Verify signature "cks"

User agent

Authorization manager

Service provider

Consumer

Step 1: Provision consumer key and access token to consumer (V2009.04.09.1)
Dotted-line steps take place outside this protocol.

Need to access resource "r"

GET "r"

401 unauthorized; protection realm "pr";
location of protection realm metadata

opt [consumer doesn't have access token]

GET protection realm "pr" metadata

Protection realm "pr" metadata
(incl. authorization manager location
and service provider handle "sph")

opt [consumer doesn't have consumer key]

POST request consumer key

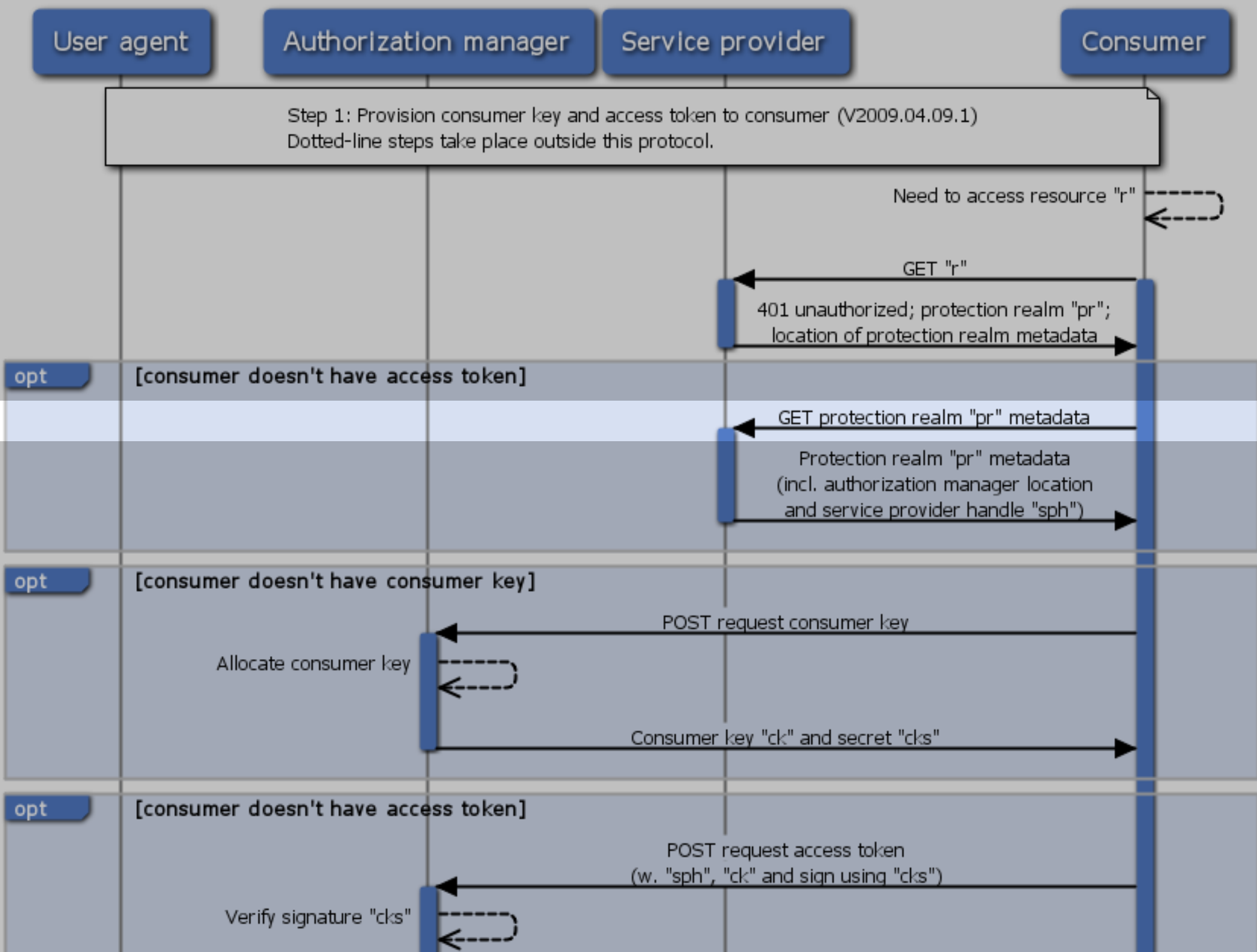
Allocate consumer key

Consumer key "ck" and secret "cks"

opt [consumer doesn't have access token]

POST request access token
(w. "sph", "ck" and sign using "cks")

Verify signature "cks"



User agent

Authorization manager

Service provider

Consumer

Step 1: Provision consumer key and access token to consumer (V2009.04.09.1)
Dotted-line steps take place outside this protocol.

Need to access resource "r"

GET "r"

401 unauthorized; protection realm "pr";
location of protection realm metadata

opt [consumer doesn't have access token]

GET protection realm "pr" metadata

Protection realm "pr" metadata
(incl. authorization manager location
and service provider handle "sph")

opt [consumer doesn't have consumer key]

POST request consumer key

Allocate consumer key

Consumer key "ck" and secret "cks"

opt [consumer doesn't have access token]

POST request access token
(w. "sph", "ck" and sign using "cks")

Verify signature "cks"

User agent

Authorization manager

Service provider

Consumer

Step 1: Provision consumer key and access token to consumer (V2009.04.09.1)
Dotted-line steps take place outside this protocol.

Need to access resource "r"

GET "r"

401 unauthorized; protection realm "pr";
location of protection realm metadata

opt [consumer doesn't have access token]

GET protection realm "pr" metadata

Protection realm "pr" metadata
(incl. authorization manager location
and service provider handle "sph")

opt [consumer doesn't have consumer key]

POST request consumer key

Allocate consumer key

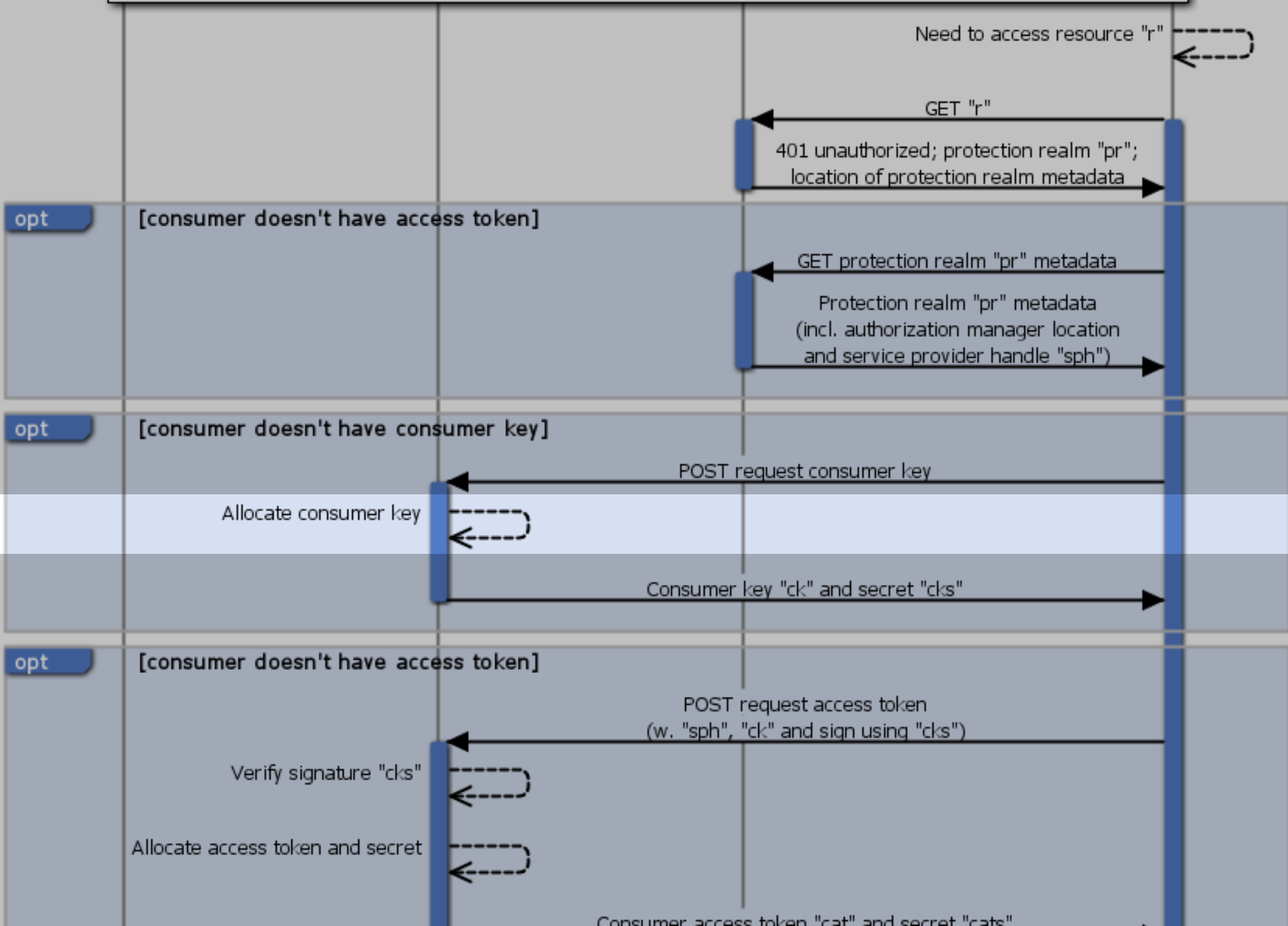
Consumer key "ck" and secret "cks"

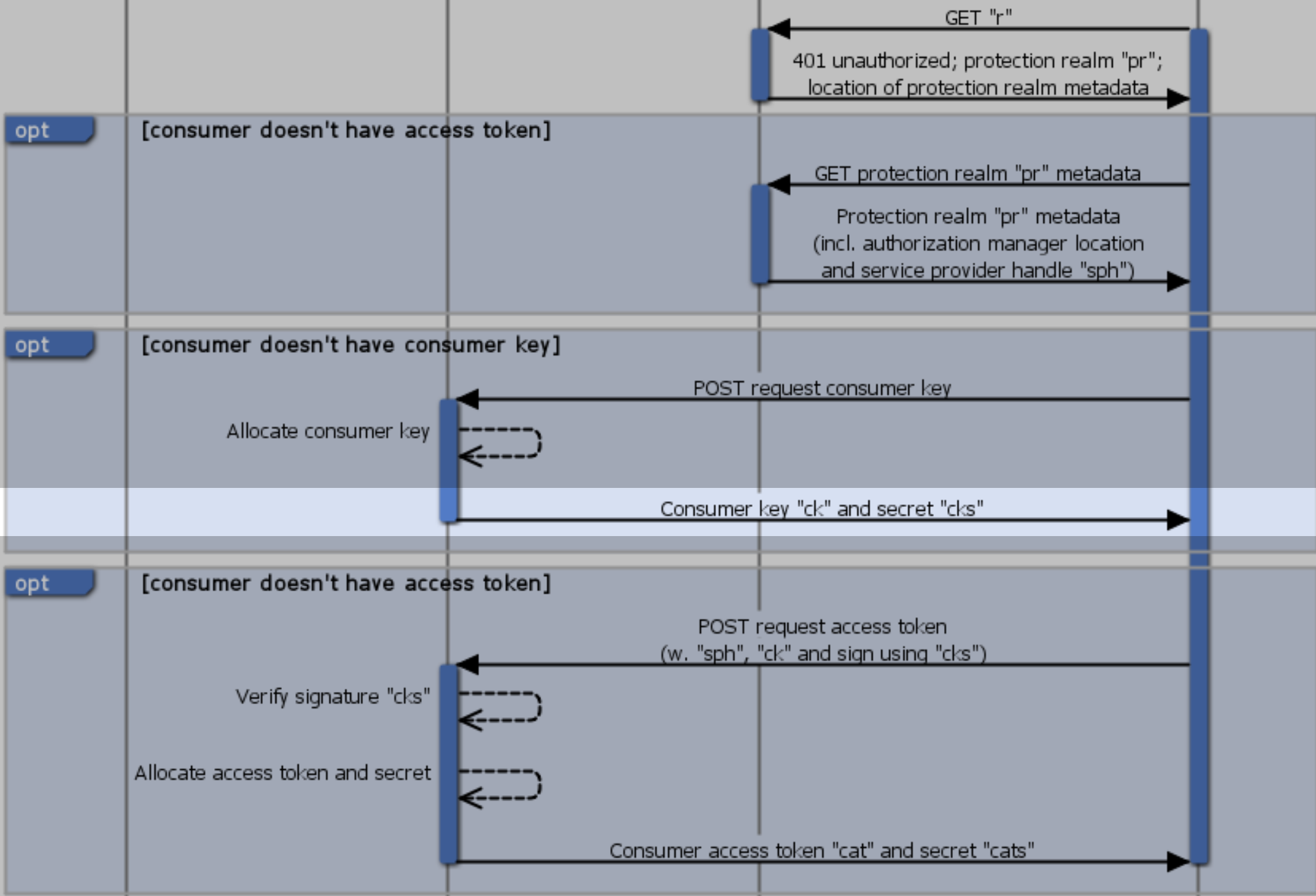
opt [consumer doesn't have access token]

POST request access token
(w. "sph", "ck" and sign using "cks")

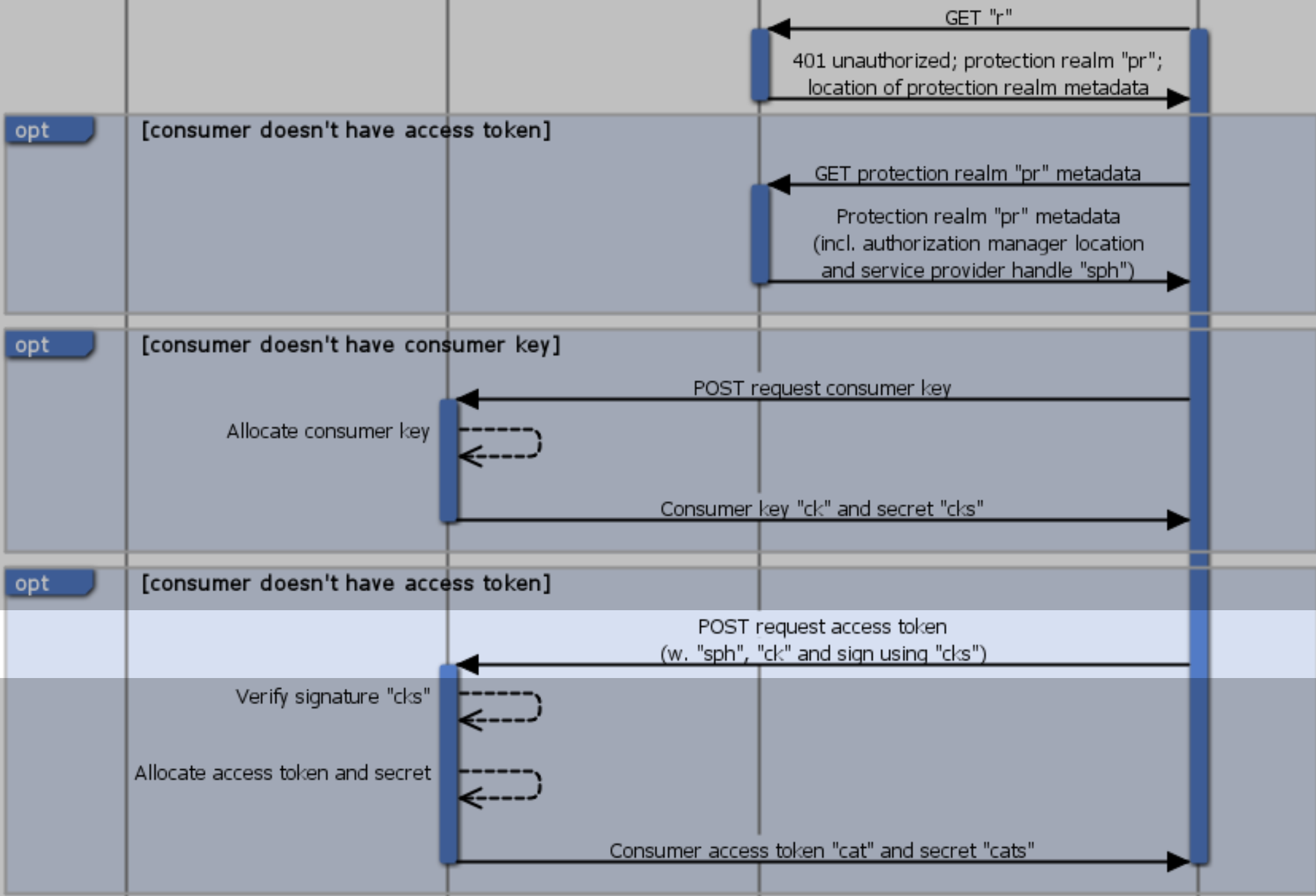
Verify signature "cks"

Step 1: Provision consumer key and access token to consumer (V2009.04.09.1)
Dotted-line steps take place outside this protocol.

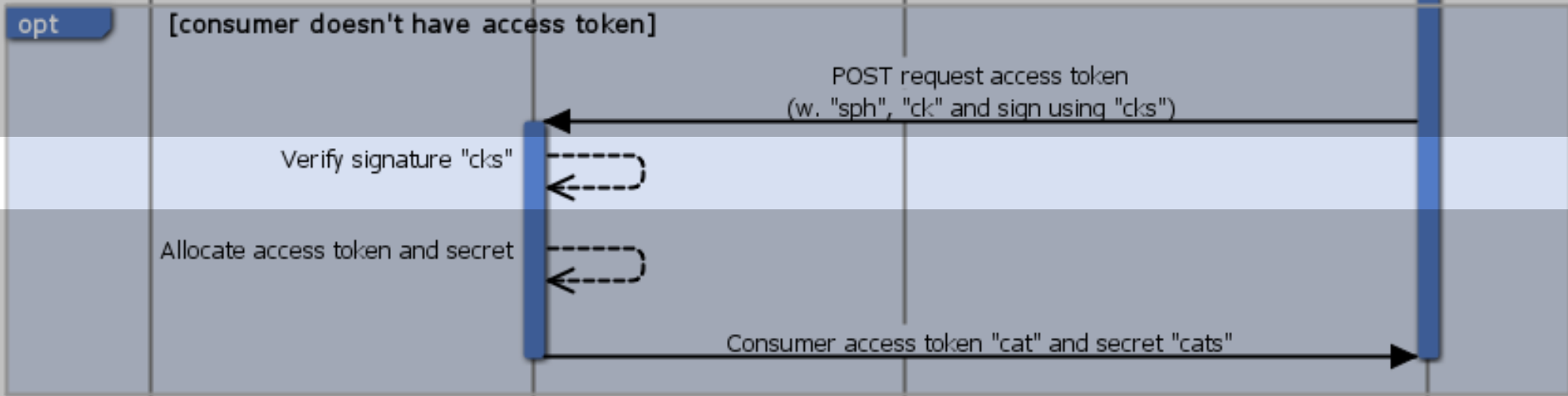
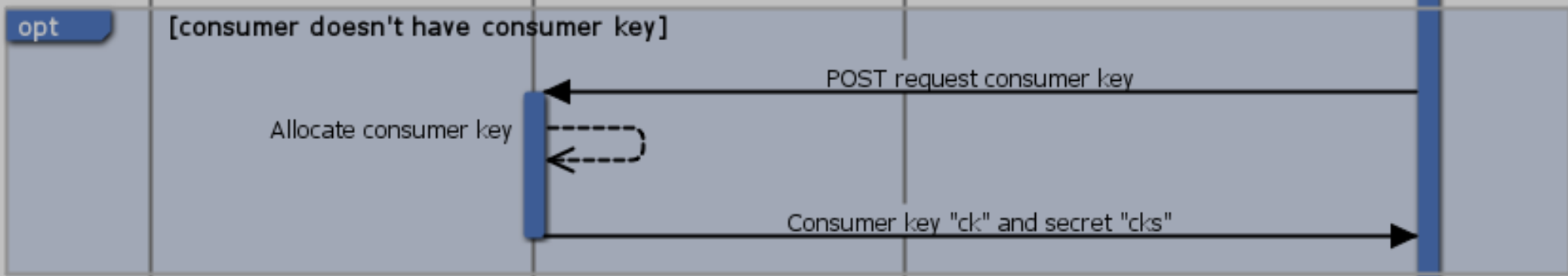




Note: This protocol deviates from OAuth, in that consumer key is intended only to acquire access tokens, and is not used for subsequent authentication of resource requests.

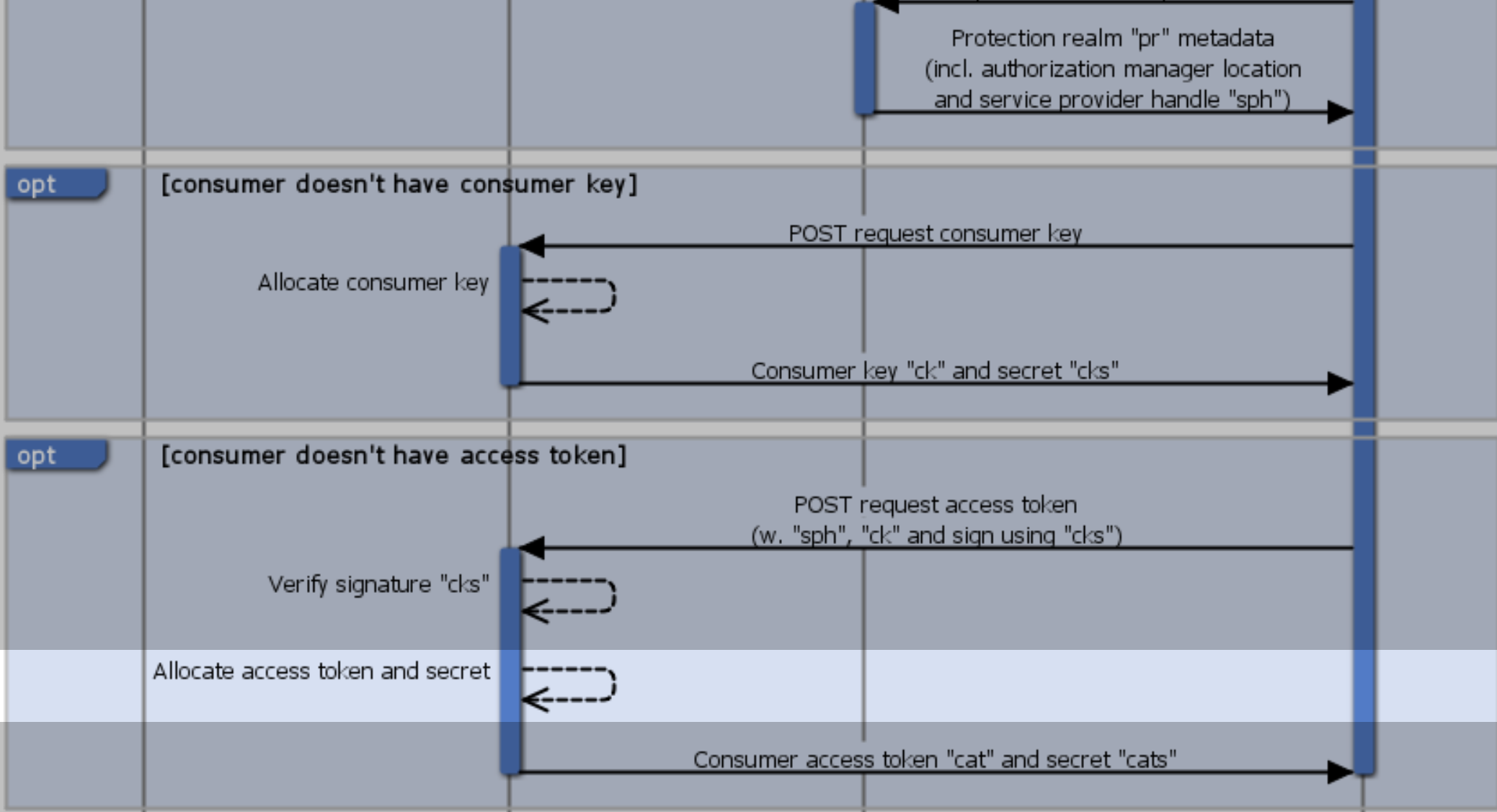


Note: This protocol deviates from OAuth, in that consumer key is intended only to acquire access tokens, and is not used for subsequent authentication of resource requests.



Note: This protocol deviates from OAuth, in that consumer key is intended only to acquire access tokens, and is not used for subsequent authentication of resource requests.

Implementation note: Authorization manager should take steps to prevent denial of service attacks from spurious consumer key and access token requests.



Note: This protocol deviates from OAuth, in that consumer key is intended only to acquire access tokens, and is not used for subsequent authentication of resource requests.

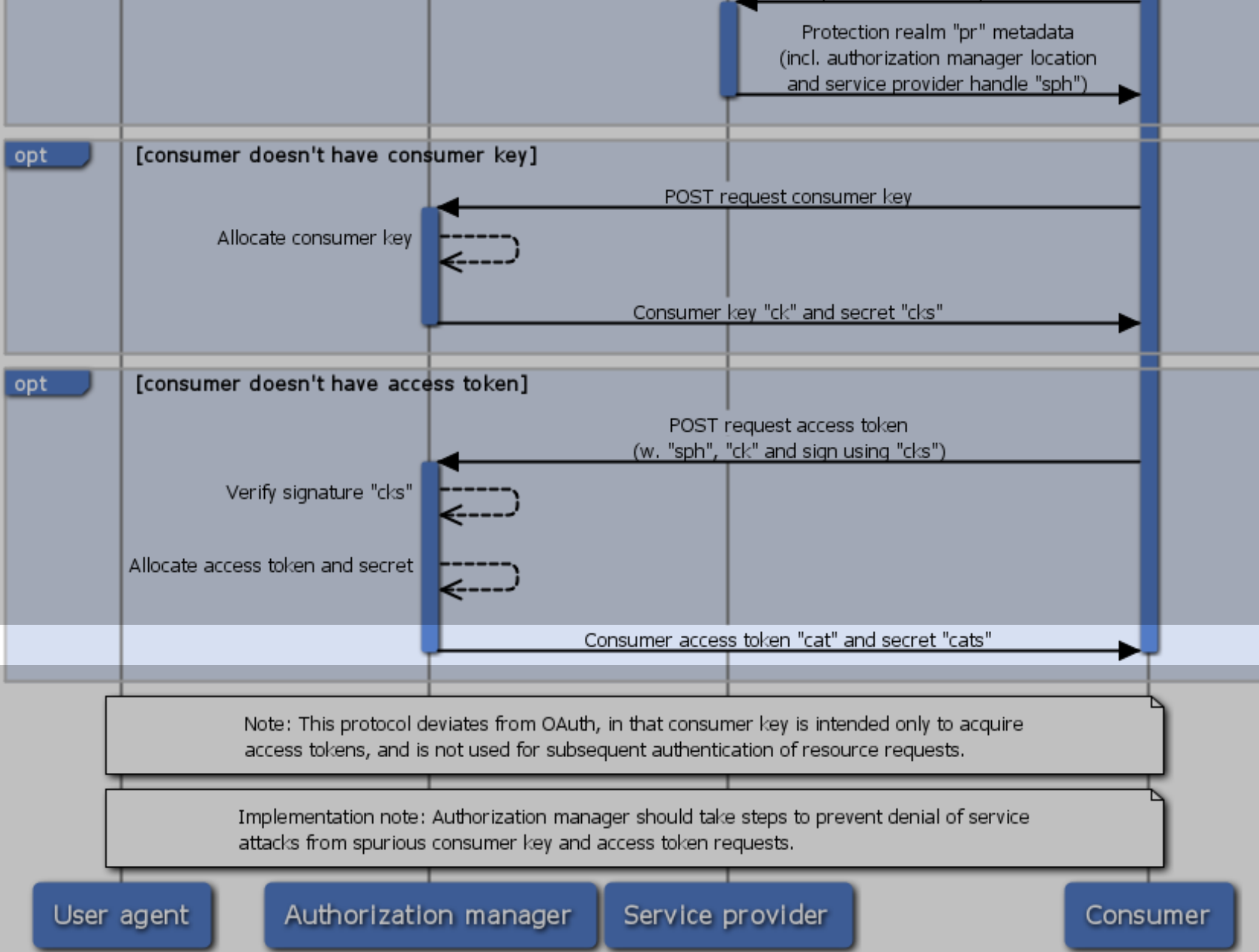
Implementation note: Authorization manager should take steps to prevent denial of service attacks from spurious consumer key and access token requests.

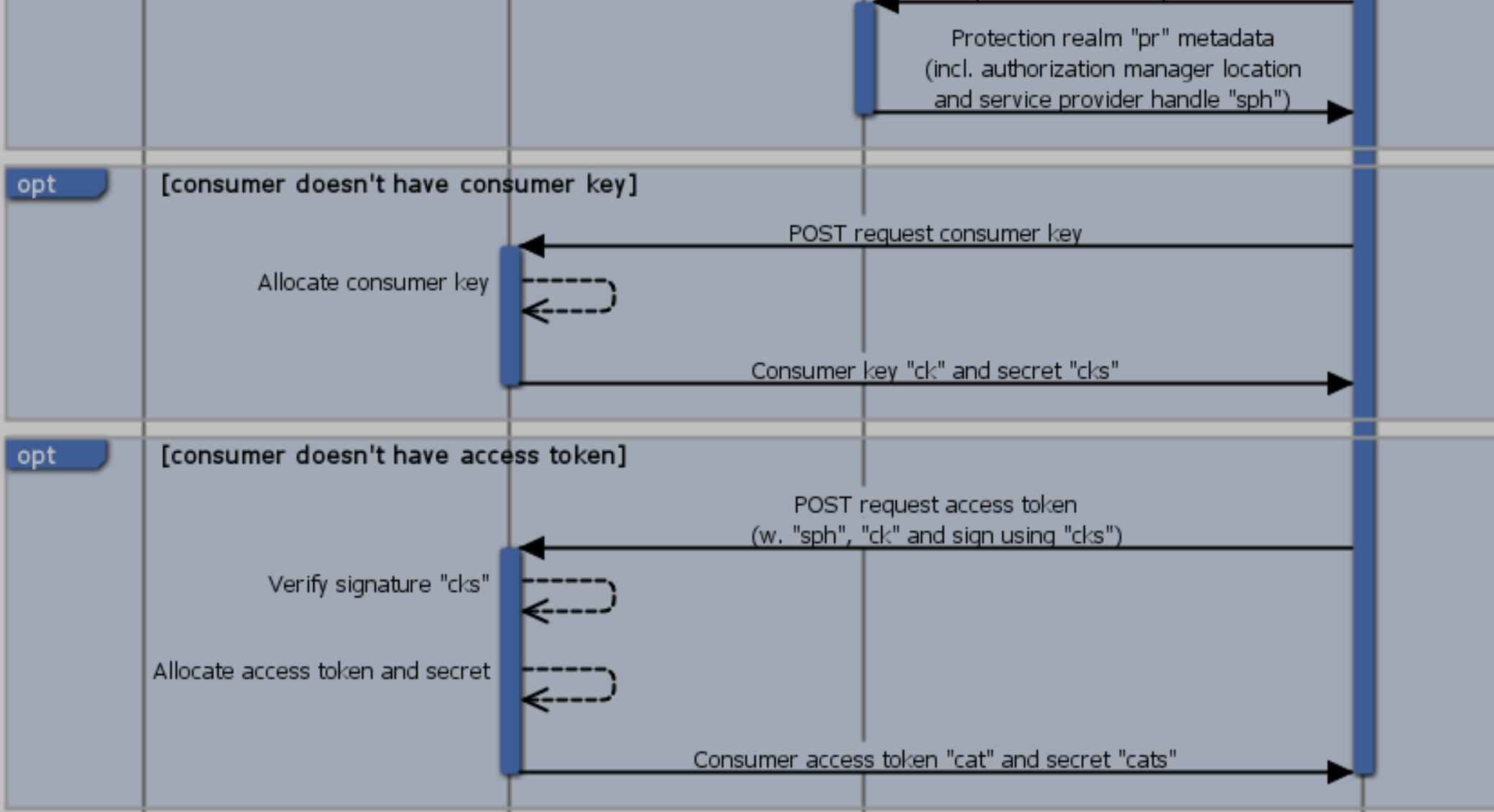
User agent

Authorization manager

Service provider

Consumer





Note: This protocol deviates from OAuth, in that consumer key is intended only to acquire access tokens, and is not used for subsequent authentication of resource requests.

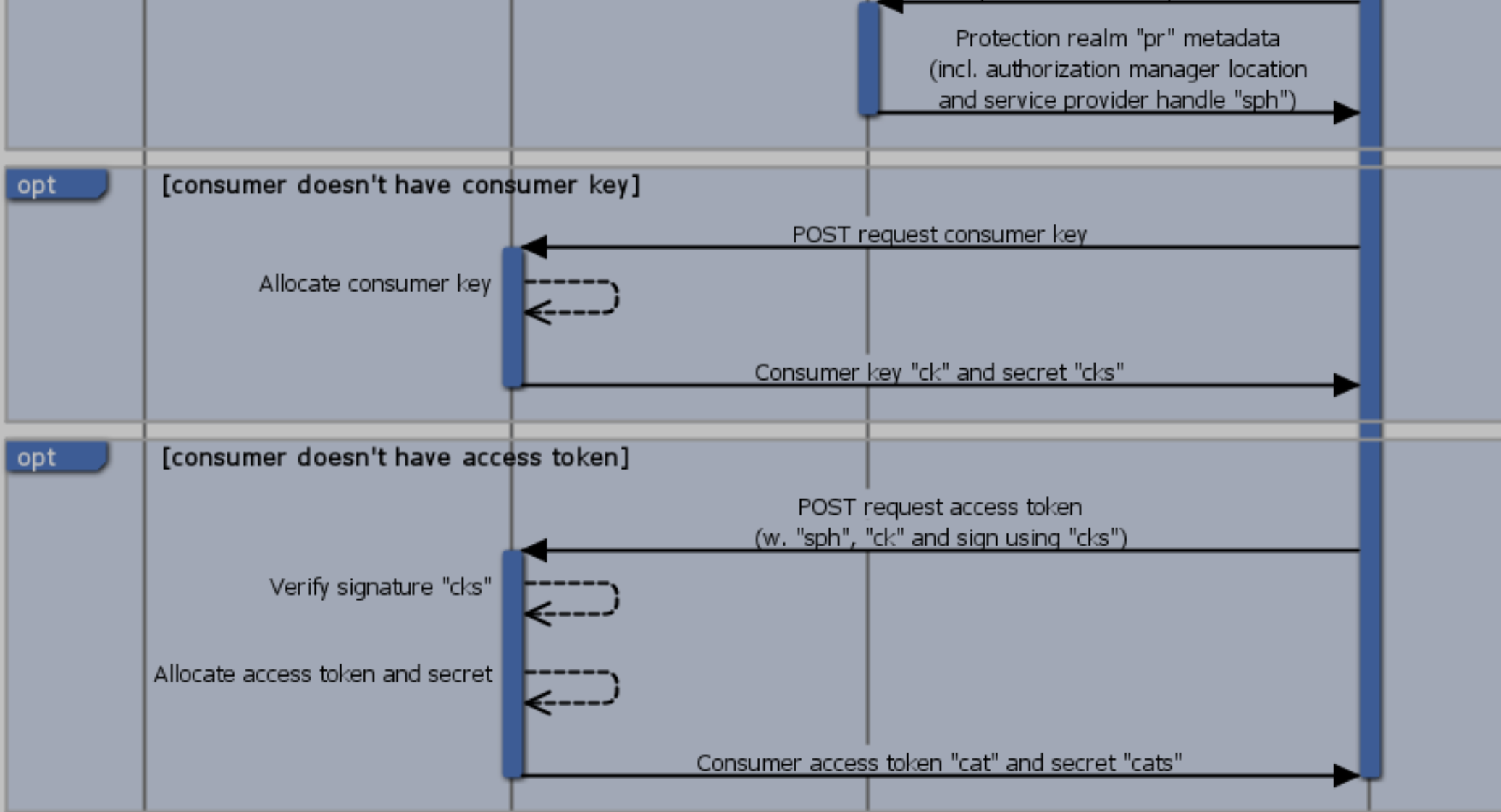
Implementation note: Authorization manager should take steps to prevent denial of service attacks from spurious consumer key and access token requests.

User agent

Authorization manager

Service provider

Consumer



Note: This protocol deviates from OAuth, in that consumer key is intended only to acquire access tokens, and is not used for subsequent authentication of resource requests.

Implementation note: Authorization manager should take steps to prevent denial of service attacks from spurious consumer key and access token requests.

User agent

Authorization manager

Service provider

Consumer